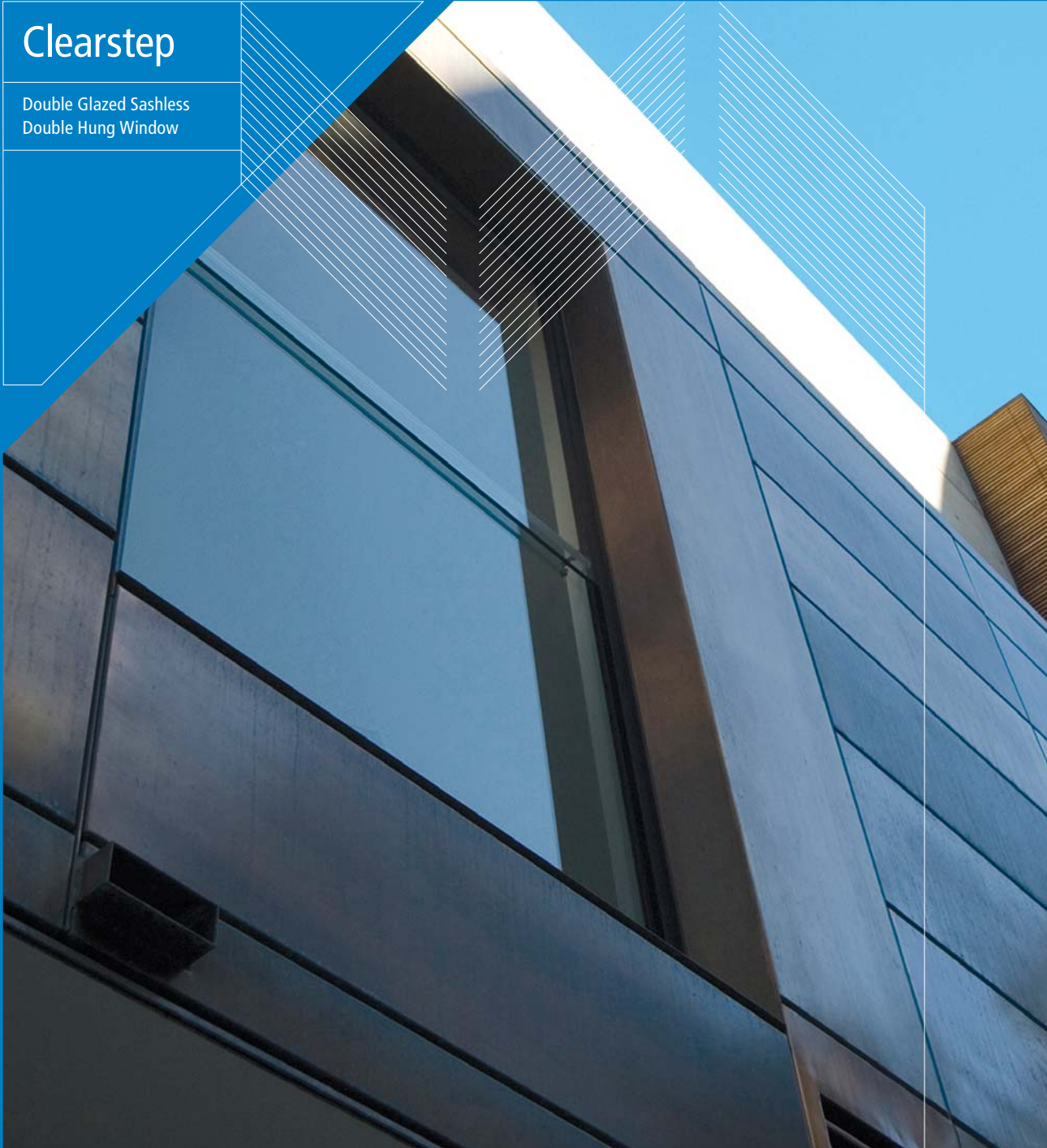


The 1st True Double Glazed
Sashless Window



Clearstep

Double Glazed Sashless
Double Hung Window



A double glazed window built in a sashless way.

Clearstep provides all the benefits of traditional double glazed windows with the seamless look and style of a sashless window. Clearstep is ideal for colder climates and where high glazing levels are needed to meet energy rating requirements.

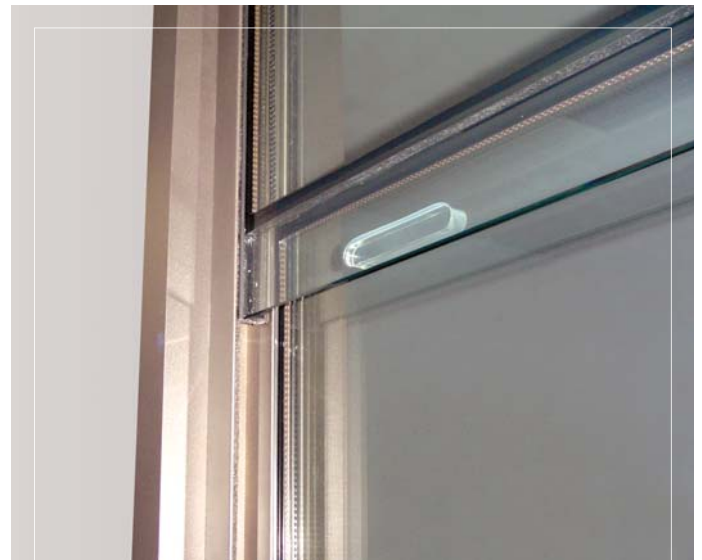
Clearstep

Double Glazed Sashless Double Hung Window

Finally a double glazed sashless window that actually looks like a sashless window!

Aneeta Windows identified the need for a double glazed double hung window that provides the "sashless" look.

AUS Patent No. 2005201474
US Patent No. 7,716,875



Task

The task was to use existing technology and create a double glazed unit without the aluminium capping on the insulated glass edges.

Solution

The solution was to incorporate one of the double glazed panes with a **step** – where one piece of glass is longer than the other.

Result

The result is an overlap of glass between the top and bottom panes. The aluminium interlocking rails were replaced with an extruded clear lap seal complete with weather-strip. End result – a double glazed sashless window that complements our 6mm and 10mm single glazed units.

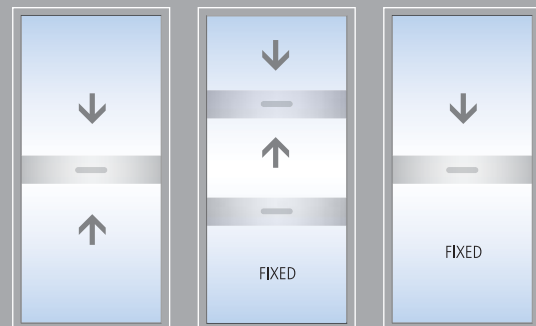
Providing

We provide an increased energy efficient double glazed unit by using our existing double glazed unit with the added feature of our new **Clearstep**.

Specify

Be sure, clear and precise to demand "Aneeta Window Systems' Clearstep Double Glazed Sashless Window".

Typical Configurations



Benefits

- Looks almost identical to our single glazed sashless windows
- Provides the "raw" industrial look preferred by designers
- Counterbalanced to maintain an easy opening operation
- Designed with the slimmest sash framing system available
- Provides a superior thermal performance
- Can be supplied in 3 pane and servery configurations
- Double Glazed units are designed around a 16mm overall size – which are suitable for glass sizes of:
 - 4 glass / 8 air (argon) / 4 glass
 - 4 glass / 6 air (argon) / 6 (6.38) glass.